

Geometry Composer Report

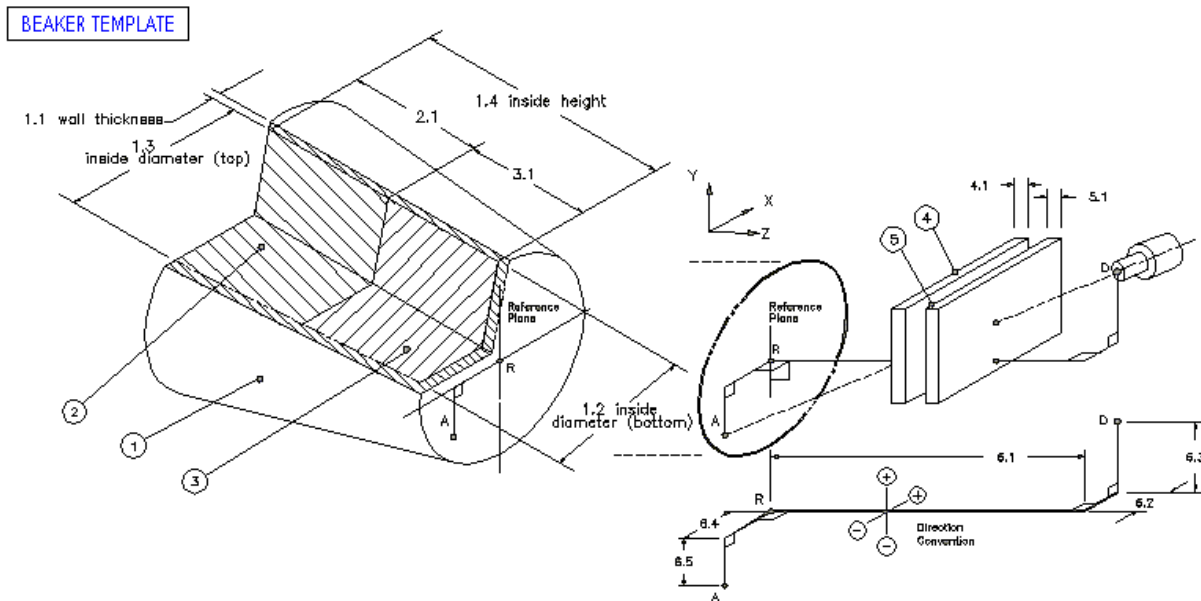
Date: Tuesday, October 20, 2015 - 15:53:40
Description: 220x bananas
Comment: bags of charred bananas filing shielding of MIT1
File Name: C:\GENIE2K\isocs\data\GEOMETRY\In-Situ\220x bananas.geo
Software: ISOCS
Template: CONE_VIEWED_FROM_END, Version: (default)
Detector: Dia=60mm_Coaxial
Environment: Temperature = 22 °C, Pressure = 760 mm Hg, Relative Humidity = 30%
Integration: Convergence = 1.00%, MDRPN = 2⁴ (16), CRPN = 2⁴ (16)

Dimensions (cm)

No.	Description	d.1	d.2	d.3	d.4	d.5	d.6	Material	Density	Rel. Conc.
1	Beaker	0.01016	27.94	27.94	31.75			hpolyeth	0.95	
2	Top Layer	0						none		
3	Bottom Layer	31.75						charcoal	0.36	1.00
4	Absorber1	0.2						acrylic	1.2	
5	Absorber2							none		
6	Source-Detector	0.2	0	0	0	0				

List of energies for efficiency curve generation

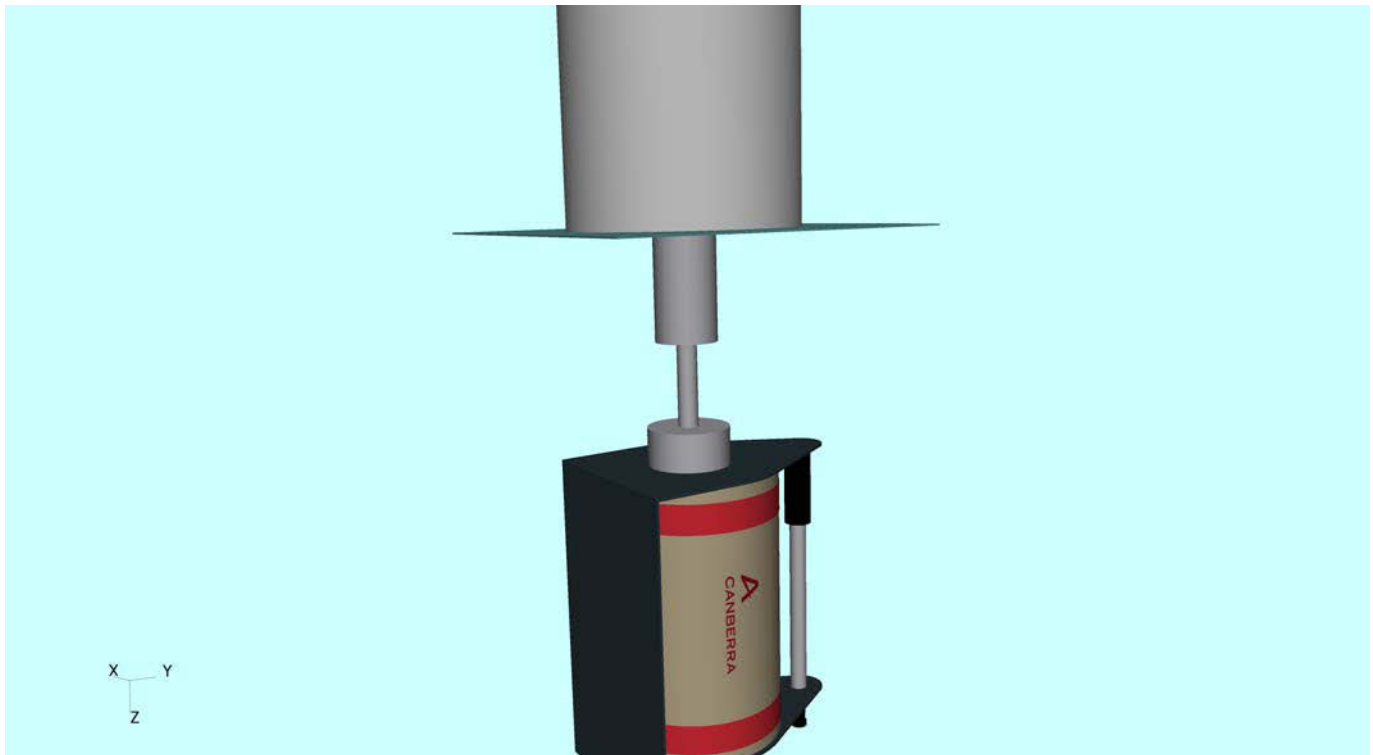
45.0 60.0 80.0 100.0 150.0 200.0 300.0 500.0
700.0 1000.0 1400.0 2000.0



Report format courtesy of Canberra Industries. Used with permission.

Geometry Composer Report

Date: Tuesday, October 20, 2015 - 15:53:40
Description: 220x bananas
Comment: bags of charred bananas filing shielding of MIT1
File Name: C:\GENIE2K\isocs\data\GEOMETRY\In-Situ\220x bananas.geo
Software: ISOCS
Template: CONE_VIEWED_FROM_END, Version: (default)



Report format courtesy of Canberra Industries. Used with permission.

MIT OpenCourseWare
<https://ocw.mit.edu>

22.01 Introduction to Nuclear Engineering and Ionizing Radiation

Fall 2016

For information about citing these materials or our Terms of Use, visit: <https://ocw.mit.edu/terms>.